



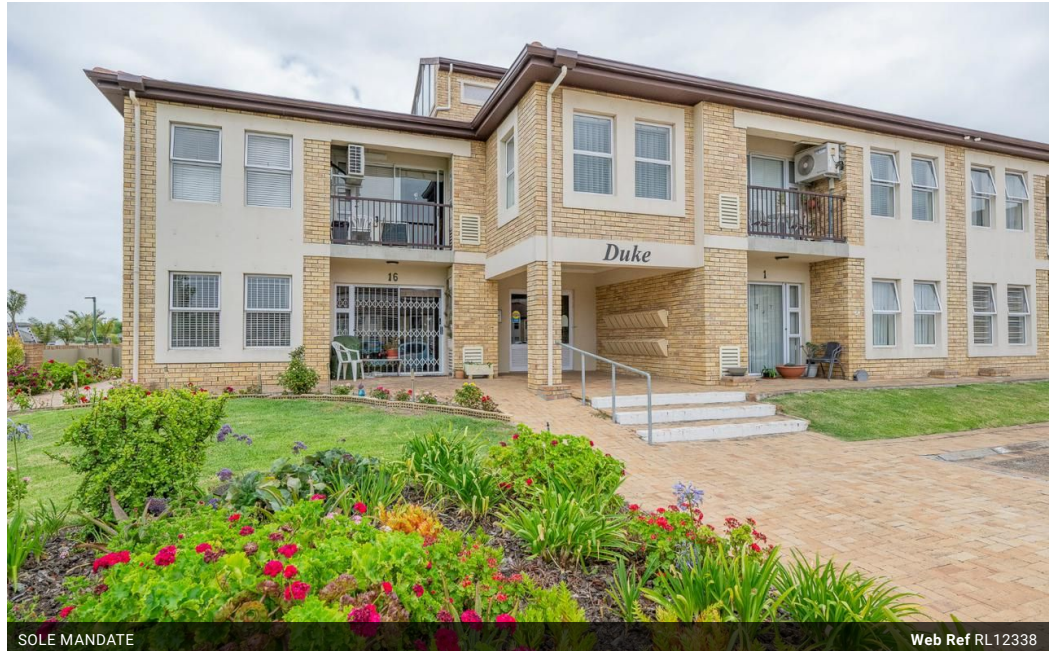
Leandri Raats
0799774249
leandri@louwcoetzee.co.za

Contact Louw & Coetzee
Properties

021 0003488

35 Main Road, Durbanville

2 Bedroom Flat For Sale in Brackenfell South



SOLE MANDATE

Web Ref RL12338



R1,800,000

2 1 1

Monthly Bond Repayment R18,579.39

Calculated over 20 years at 11% with no deposit.

Transfer Costs R61,039.00

Bond Costs R30,875.00

These calculations are only a guide. Please ask your conveyancer for exact calculations.

Monthly Levy R2,550

Monthly Rates R660

Charming Apartment in Othello Retirement Village

Sole Mandate: Discover the perfect blend of comfort and convenience with this delightful 2-bedroom ground-floor apartment, situated in the highly sought-after Othello Retirement Village in Brackenfell Central.

This inviting home features two bedrooms with built-in cupboards, providing ample storage space. The open-plan kitchen boasts modern finishes, including sleek granite countertops, a glass-top hob, and an extractor fan, ensuring a stylish and functional cooking area. The bedrooms are fitted with elegant laminated flooring, enhancing the apartment's contemporary feel. The bathroom is thoughtfully designed with a spacious double shower, offering both luxury and practicality.

Additional features include a single garage and a designated parking bay, with ample visitor parking available right outside the building for added...

Features

Interior

Bedrooms	2
Bathrooms	1
Kitchens	1
Recep. Rooms	1
Furnished	No

Exterior

Garages	1
Security	Yes
Pool	No
Views	False

Sizes

Floor Size	60m ²
------------	------------------

Extras

CCTV 24-Hour Manned Electric Fencing Retirement Living Open Plan Open Stoep Extra Parking
Blinds TV Port Prepaid Electricity Security Estate