



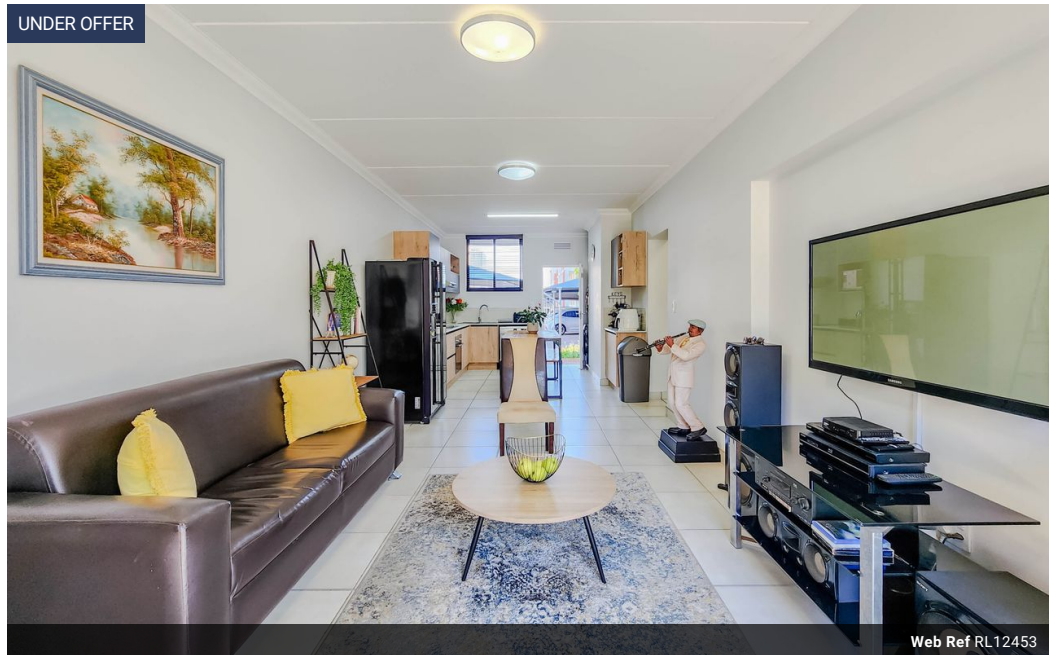
Anneke Snyman
Non-Principal Property Practitioner
Registered with PPRA (FFC 124 211 8)
0825670991
annekes@louwcoetzee.co.za

Contact Louw & Coetzee Properties

021 0003488

35 Main Road, Durbanville

UNDER OFFER



Web Ref RL12453



R1,800,000

Monthly Bond Repayment R18,579.39
Calculated over 20 years at 11% with no deposit.

Transfer Costs R61,039.00 **Bond Costs** R30,875.00

These calculations are only a guide. Please ask your conveyancer for exact calculations.

Monthly Levy R1,580

2 1

Secure, Stylish & Serene – Ground-Floor Unit with Private Outdoor Space

Situated in a secure, 24-hour manned estate, this modern ground-floor apartment combines peace of mind, practical living, and a fantastic location. With top schools nearby and quick access to main roads and the N1, it's ideal for professionals, young families, or investors looking for a smart buy.

This stylish unit features two well-proportioned bedrooms with built-in cupboards and contemporary tiled flooring. A full family bathroom adds everyday convenience. The open-plan living area includes a built-in braai right in the lounge, creating a warm, inviting space perfect for entertaining or relaxed evenings at home. A sliding door leads out to your private garden, offering the ideal blend of indoor-outdoor living. The estate also includes a safe play area for children to enjoy.

The sleek kitchen offers ample cupboard space, an...

Features

Interior		Exterior		Sizes	
Bedrooms	2	Carports / Parkings	1	Floor Size	68m ²
Bathrooms	1	Security	Yes		
Kitchens	1	Pool	No		
Recep. Rooms	1	Views	False		
Furnished	No				

Extras

Built In Braai Open Plan Modern Security Complex Blinds TV Port Aluminium Window Prepaid Electricity Fibre Ground Floor