

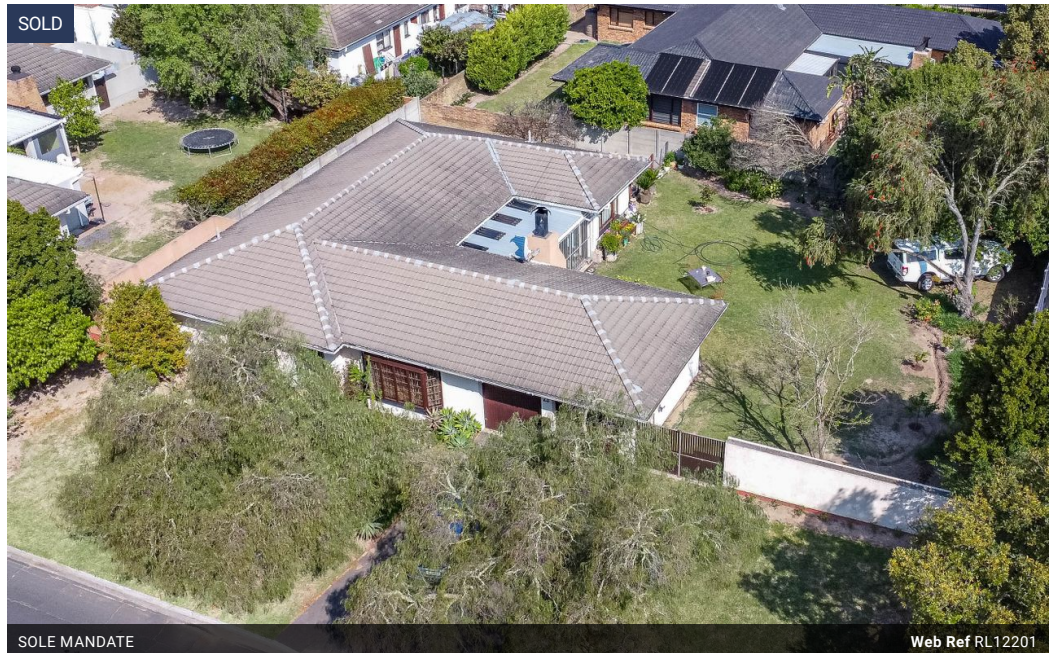


Pieter De Swardt
083 460 8137
pieter@louwcoetzee.co.za

Contact Louw & Coetzee Properties

021 0003488

35 Main Road, Durbanville



SOLE MANDATE

Web Ref RL12201



R3,650,000

Monthly Bond Repayment R37,674.88
Calculated over 20 years at 11% with no deposit.

Transfer Costs R240,382.00 **Bond Costs** R49,725.00
These calculations are only a guide. Please ask your conveyancer for exact calculations.

4 2 2

SPACIOUS 4-BEDROOM HOME WITH LARGE PLOT

Sole Mandate! Walk to Gene Louw Primary and Stellenberg High.

Spacious low-key family home with 4 proper open plan living areas.

Open Plan Kitchen with Scullery.

Great Braai Room !

4 Spacious bedrooms.

2 Neat Bathrooms

Double Automated Garages with direct access .

AND BEST OF ALL: A safe, enclosed level backyard for kids to play, to keep pets and to build on.

Lots of extra parking for extra vehicles.

Features

Pets Allowed Yes

Interior
Bedrooms 4
Bathrooms 2
Kitchens 1
Recep. Rooms 4
Furnished No

Exterior
Garages 2
Security Yes
Pool No
Views False

Sizes
Floor Size 241m²
Land Size 1,054m²

Extras
Prepaid Electricity Linen Cupboard Wood Window Entrance Hall

