



Johan de Bruyn
082 881 2011
johan@louwcoetzee.co.za

Contact Louw & Coetzee Properties

021 0003488

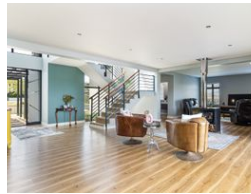
35 Main Road, Durbanville

UNDER OFFER



SOLE MANDATE

Web Ref RL12302



R10,995,013

Monthly Bond Repayment R113,489.25
Calculated over 20 years at 11% with no deposit.

Transfer Costs R1,096,278.43 Bond Costs R89,535.00
These calculations are only a guide. Please ask your conveyancer for exact calculations.

Monthly Levy R3,270

5 Bedrooms 5.5 Bathrooms 2 Garages

Not to be missed - 5 Bedroom house in Clara Anna Fontein.

SOLE MANDATE. The lower level of this beautiful home features an open-plan living area that seamlessly connects the lounge, family room, and dining room, complete with a cozy fireplace perfect for gatherings. Enjoy entertaining outdoors in the spacious braai room with a built-in braai and pizza oven, which opens up to a fantastic deck area overlooking the pool and offering breathtaking views.

The stunning kitchen is the heart of the home, offering a generous center island, ample cupboard space, and a separate scullery and laundry for all your needs. For added convenience, the lower level also features a fifth bedroom with an en-suite bathroom and a study that opens directly onto the garden, perfect for remote work or peaceful reading.

Head upstairs to find a cozy pajama lounge with its own balcony, ideal for relaxing...

Features

Pets Allowed Yes

Interior

Bedrooms 5
Bathrooms 5.5
Kitchens 1
Recep. Rooms 5
Studies 1
Furnished No

Exterior

Garages 2
Security Yes
Pool Yes
Views True

Sizes

Floor Size 444m²
Land Size 1,000m²

Extras

Entrance Hall Pajama Lounge Scullery Guest Toilet Built In Braai Double Storey Cu_De_Sac Open Plan North Walk In Closet Blinds TV Port Fireplace Prepaid Electricity Fibre Gas Bottle Electrical Geyser 24-Hour Manned Estate

