



Juanita Wiese
Non-Principal Property Practitioner
Registered with PPRA (FFC 088 708 1)
072 497 1492
juanitaw@louwcoetzee.co.za

Contact Louw & Coetzee Properties

021 0003488

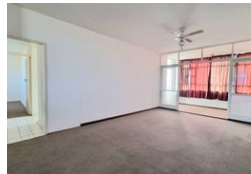
35 Main Road, Durbanville

SOLD



SOLE MANDATE

Web Ref RL12136



R800,000

2 1.5

Monthly Bond Repayment R8,257.51
Calculated over 20 years at 11% with no deposit.

Transfer Costs R25,898.00 **Bond Costs** R19,565.00
These calculations are only a guide. Please ask your conveyancer for exact calculations.

Monthly Levy R2,125 **Monthly Rates** R210

Discover Your Dream Home with Breathtaking Views!

Embrace the stunning vistas of Table Mountain and the Western Cape from your very own property in the sought-after Edward Heights complex. This exceptionally spacious flat is a canvas waiting for your personal touch and creativity to transform it into the ultimate dream home.

- Uninterrupted Views: Enjoy magnificent views from the main bedroom and an additional sunroom, stretching as far as Robben Island.
- Generous Space: The flat features two large bedrooms plus a versatile sunroom, perfect for relaxation or a home office.
- Comfortable Living: The open-plan lounge and dining area provide a spacious and inviting environment for everyday living.
- Functional Kitchen: Ample cupboard space ensures your kitchen is as practical as it is stylish.
- Convenient Facilities: A full bathroom plus an extra guest toilet cater to all your...

Features

Interior		Exterior		Sizes	
Bedrooms	2	Security	Yes	Floor Size	86m ²
Bathrooms	1.5	Pool	Yes		
Kitchens	1	Views	False		
Recep. Rooms	1				
Furnished	No				

Extras
Communal Braai Area Lifts Security Complex Steel