

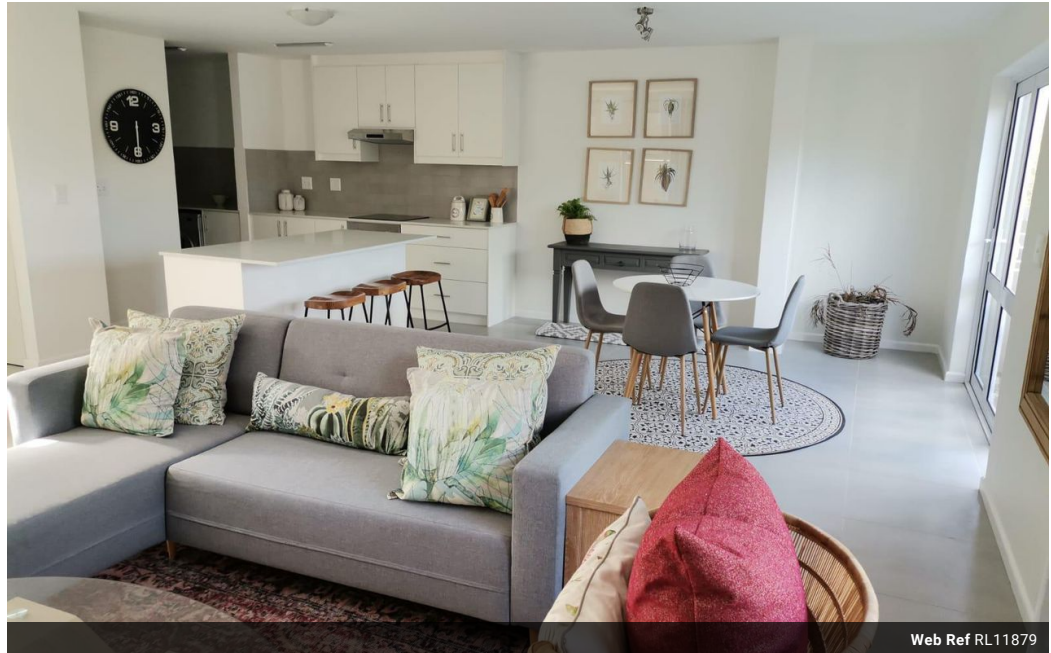


Andre Cilliers
Non-Principal Property Practitioner
Registered with PPRA (FFC 070 906 8)
0795172927
andrec@louwcoetzee.co.za

Contact Louw & Coetzee Properties

021 0003488

35 Main Road, Durbanville



Web Ref RL11879



R3,400,000

🛏️ 4 🚿 2.5 🏠 2

Monthly Bond Repayment R35,094.41
Calculated over 20 years at 11% with no deposit.

Transfer Costs R208,547.00 **Bond Costs** R45,955.00
These calculations are only a guide. Please ask your conveyancer for exact calculations.

Monthly Levy R1,475 **Monthly Rates** R1,225

Secure 4-bedroom family home for sale in Honeydew Country Estate

Situated in the popular Honeydew Country Estate, this four-bedroom, pet-friendly family home is in a truly excellent location, within walking distance from various renowned schools.

The residence features four bedrooms, 2.5 bathrooms, an open-plan dining room, and lounge, as well as an open stoep to enjoy the outdoors. The kitchen has a gas oven, centre island, extractor fan, granite tops, and a separate scullery; while the double garage has automated doors and offers direct access to the home.

Welcome extras include a solar geyser, fibre-readiness, 2 air-conditioners.

Residents of Honeydew Country Estate enjoy access to an enclosed dog park, beautiful play parks, a swimming pool, as well as safe running and walking trails. There is also a mini soccer field, tennis and netball wall, an outdoor gym, putt-putt course, and full...

Features

Pets Allowed	Yes
Interior	
Bedrooms	4
Bathrooms	2.5
Kitchens	1
Recep. Rooms	2
Furnished	No

Exterior	
Garages	2
Security	Yes
Pool	Yes
Views	False

Sizes	
Floor Size	177m ²
Land Size	187m ²

Extras

Guest Toilet Air Conditioner TV Port Double Storey Extra Parking 24Hour Manned Estate Aluminium Window Prepaid Electricity Solar Geyser Fibre