



**Andre Cilliers**  
Non-Principal Property Practitioner  
Registered with PPRA (FFC 070 906 8)  
0795172927  
andrec@louwcoetzee.co.za

Contact Louw & Coetzee Properties

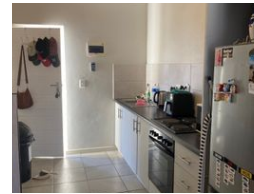
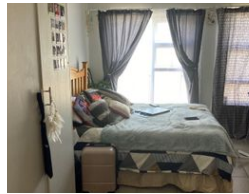
021 0003488

35 Main Road, Durbanville



SOLE MANDATE

Web Ref RL11892



R620,000



**Monthly Bond Repayment** R6,399.57  
Calculated over 20 years at 11% with no deposit.

**Transfer Costs** R23,730.00    **Bond Costs** R17,680.00

These calculations are only a guide. Please ask your conveyancer for exact calculations.

**Monthly Levy** R1,630    **Monthly Rates** R755

**Investment opportunity with stunning mountain views**

Sole Mandate: This charming studio apartment, situated within the tranquil surroundings of La Vie Estate, presents an appealing investment opportunity for those seeking reliable rental returns. With its well-maintained interiors and thoughtful design, the unit offers residents a comfortable living space complemented by serene views of both the Du Toits Kloof and the majestic Paarl mountains.

In addition to its aesthetic appeal, the apartment complex boasts a range of amenities designed to enhance residents' convenience and quality of life. From ample parking space for residents and visitors alike to secure gating providing peace of mind, the complex ensures a hassle-free living experience. Furthermore, on-site laundry facilities eliminate the need for off-site trips, adding another layer of convenience for tenants.

Located in...

**Features**

Interior		Exterior		Sizes	
Bedrooms	1	Carports / Parkings	1	Floor Size	26m <sup>2</sup>
Bathrooms	1	Security	No		
Kitchens	1	Pool	No		
Furnished	No	Views	True		

**Extras**

Gated Complex Complex Aluminium Window Prepaid Electricity