



Coenrad Willemse
Non-Principal Property
Practitioner
Registered with PPRA
(FFC 113 600 5)
0843856453
coenradw@louwcoetzee.co.za

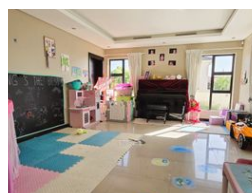
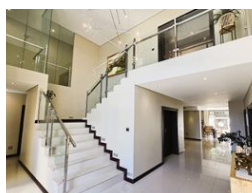
Contact Louw & Coetzee
Properties

021 0003488

35 Main Road, Durbanville



Web Ref RL12354



R10,995,000



5



7



3

Monthly Bond Repayment R113,489.11

Calculated over 20 years at 11% with no deposit.

Transfer Costs R1,096,277.00 **Bond Costs** R89,535.00

These calculations are only a guide. Please ask your conveyancer for exact calculations.

Monthly Rates R4,260

A Symphony of Luxury on Baronetcy Boulevard

Welcome to a residence that defines elegance and sophistication. Nestled on the prestigious Baronetcy Boulevard in Platteklouf, this architectural masterpiece is designed for those who appreciate uncompromising luxury, seamless functionality, and breathtaking views.

From the grand double-volume entrance to every meticulously crafted detail, this home exudes opulence and refinement. Soaring ceilings and expansive windows flood the space with natural light, while premium finishes and thoughtful design create a perfect balance of style and practicality.

* Ground Floor – A Haven for Entertainment and Relaxation

* Wine Cellar/Store Room: Showcase and savor the finest vintages, or utilize as a spacious storage area.

* Cinema/TV Room: An intimate retreat for unforgettable movie nights, complete with an en-suite bathroom that also...

Features

Pets Allowed Yes

Interior

Bedrooms	5
Bathrooms	7
Kitchens	1
Recep. Rooms	5
Studies	1
Furnished	No

Exterior

Garages	3
Security	Yes
Dom. Accom.	1
Pool	Yes
Views	True

Sizes

Floor Size	636m ²
Land Size	871m ²

Extras

Double Storey Modern Entrance Hall Pajama Lounge Scullery Guest Toilet Built In Braai Extra Parking Outside Toilets Air Conditioner Blinds TV Port Fireplace Aluminium Window Fibre Gas Bottle Electrical Geyser Central Vacuum System Jacuzzi Linen Cupboards Outdoor Beams Alarm System Electric Gate Open Plan