



Susann Schoombee
Non-Principal Property Practitioner
Registered with PPRA (FFC 008 948 5)
083 460 4422
susanns@louwcoetzee.co.za

Contact Louw & Coetzee Properties

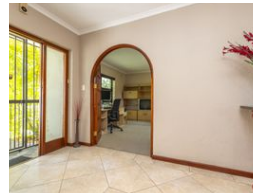
021 0003488

35 Main Road, Durbanville



SOLE MANDATE

Web Ref RL12247



R3,945,000

4 3 2

Monthly Bond Repayment R40,719.83
Calculated over 20 years at 11% with no deposit.

Transfer Costs R275,000.00 **Bond Costs** R51,610.00
These calculations are only a guide. Please ask your conveyancer for exact calculations.

Monthly Rates R1,300

Family home with space and great flow in excellent position

Sole Mandate: Generous living spaces are perfectly complimented by 4 double bedrooms and 3 well-proportioned bathrooms.

The "eat in" kitchen has a centre island that can seat 8 people and features quality granite countertops, a large grocery cupboard and space for all your cherished appliances in the adjacent scullery/laundry room.

Well-proportioned living areas consist of a lounge, dining area and family room that leads to an expansive braai room and sunny, wind-protected heated pool, well established garden and play-space for children and pets.

Vehicles are accommodated by an automated double garage as well as a secure gated, enclosed caravan port. The paved driveway provides further parking for three additional cars.

Features:

- * Low maintenance
- * Safe parking for a caravan or boat.
- * Space for expansion at the back of...

Features

Pets Allowed		Yes			
Interior		Exterior		Sizes	
Bedrooms	4	Garages	2	Floor Size	296m ²
Bathrooms	3	Security	Yes	Land Size	714m ²
Kitchens	1	Pool	Yes		
Recep. Rooms	4	Views	False		
Furnished	No				

Extras

Freestanding Entrance Hall Scullery Carport Extra Parking 3 Parkings in Driveway Street Front Conventional Blinds TV Port Built In Braai Aluminium Window Wood Window Prepaid Electricity Fibre Electrical Geysers Satellite Dish Wendy House Linen Cupboard 2 x Water Tanks Intercom Burglar Bars Alarm System Security Gate