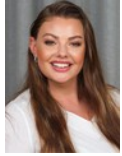




**Jessica Kolver-Louw**  
Non-Principal Property Practitioner  
Registered with PPRA (FFC FFC -11 705 81)  
0748882132  
jessica@louwcoetzee.co.za



**Deoné Lötter**  
Candidate Property Practitioner  
Registered with PPRA (FFC 121 949 7)  
066 289 7885

deonev@louwcoetzee.co.za

Contact Louw & Coetzee Properties

021 0003488

35 Main Road, Durbanville



Web Ref RL11855



R3,795,000

**Monthly Bond Repayment** R39,171.55  
Calculated over 20 years at 11% with no deposit.

**Transfer Costs** R256,332.00 **Bond Costs** R49,725.00  
These calculations are only a guide. Please ask your conveyancer for exact calculations.

🛏️ 3 🚿 2.5 🚗 2

**Luxury, Security & Family Living**

Beauvais Hills, a name inspired by the beautiful views on offer, lays nestled in the lush suburb of Berg en Dal, Wellington. This modern plot-and-plan home awaits its new owners to experience exclusive estate living in the breathtaking Cape Winelands.

This particular unit, designed with an open-plan layout, offers seamless living and entertaining spaces. It features three spacious bedrooms, with the main bedroom including an en-suite bathroom equipped with a double vanity, and ample built-in storage. Bedrooms 2 and 3 share a full bathroom with a double vanity, while a convenient water closet is located near the living areas for guests.

The covered patio with built-in braai is perfect for year-round hosting. The home's finishes are meticulously selected to enhance its appearance and create a luxurious, cozy, inviting...

**Features**

**Pets Allowed** Yes

**Interior**

Bedrooms 3  
Bathrooms 2.5  
Kitchens 1  
Recep. Rooms 2  
Furnished No

**Exterior**

Garages 2  
Security Yes  
Pool No  
Views True

**Sizes**

Floor Size 205m<sup>2</sup>  
Land Size 461m<sup>2</sup>

**Extras**

24 Hour Access Security Estate Built In Braai Covered Patio Entrance Hall Garden Open Plan Secure Parking

