



Leandri Raats
0799774249
leandrir@louwcoetzee.co.za

Contact Louw & Coetzee Properties

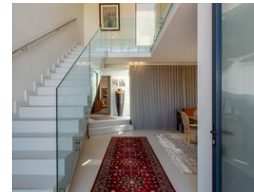
021 0003488

35 Main Road, Durbanville

FEATURED



Web Ref RL12456



R80,000 pm

Monthly Levy R0.0 Monthly Rates R0.0 Lease Period 12 months
Availability Immediately Deposit - Annual Escalation -

4 4 3

OPULENT ARCHITECTURAL SANCTUARY NESTLED IN A SERENE CUL-DE-SAC

Nestled in a serene cul-de-sac, this architecturally stunning family home offers breathtaking views and occupies a generous 1099-sqm plot within Phase 1 of the esteemed Clara Anna Fontein Lifestyle & Security Estate, conveniently located near beautifully landscaped play parks.

As you enter, a spacious grand entrance hall welcomes you into the magnificent living spaces. The expansive lounge flows seamlessly through stack-away doors to an inviting covered patio with a built-in braai and a pool area featuring an automated wooden sliding deck, perfect for entertaining and enjoying effortless indoor-outdoor living. The open-plan dining and family room, accentuated by a cozy gas fireplace, also provides direct access to the pool area.

Catering to culinary enthusiasts, the gourmet kitchen is a chef's dream, featuring a striking...

Features

Pets Allowed	Yes			
Interior		Exterior		Sizes
Bedrooms	4	Garages	3	Land Size
Bathrooms	4	Security	Yes	1,099m ²
Kitchens	1	Pool	Yes	
Recep. Rooms	5	Views	True	
Studies	1			
Furnished	No			

Extras

Prepaid Electricity Solar Geysers Solar Panels Airconditioner Fireplace Study Nook Fiber Optic Cabling Water Tanks Gas Bottle Linen Cupboard