



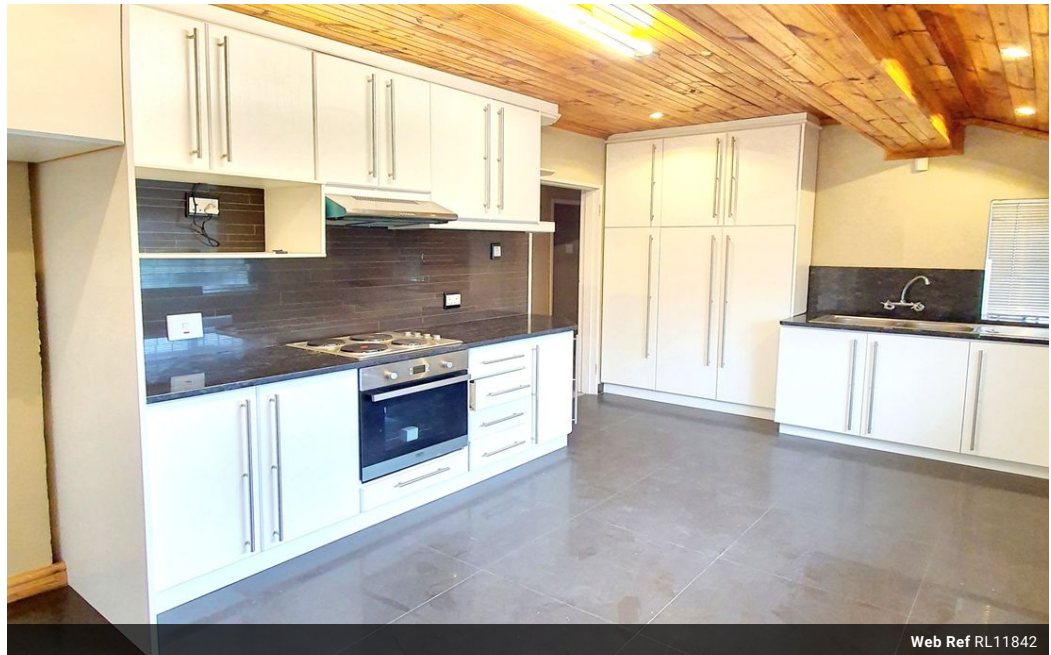
**Juanita Wiese**  
Non-Principal Property Practitioner  
Registered with PPRA (FFC 088 708 1)  
072 497 1492

juanitaw@louwcoetzee.co.za

Contact Louw & Coetzee Properties

021 0003488

35 Main Road, Durbanville



Web Ref RL11842



R16,200 pm

Monthly Levy R0.0    Monthly Rates R0.0    Special Levy R0.0  
Lease Period 12 months    Availability Immediately    Deposit -  
Annual Escalation -



**Best combination of vintage and modern**

Available Immediately.

Located just off Milton Road, in close proximity to schools, N1 City Hospital, and a bustling shopping mall, this property seamlessly marries the timeless charm of vintage design with the conveniences of modern living.

Step inside to discover the inviting warmth of this 3-bedroom family home, where wood and modern finishes come together in perfect harmony, creating a cosy and welcoming atmosphere that's perfect for a small family.

Outside, the expansive enclosed garden offers ample space for children to play freely, while a single garage, coupled with additional secure parking, ensures both convenience and peace of mind for you and your loved ones. Please don't hesitate to contact me to schedule a viewing.

**Features**

<b>Pets Allowed</b>	Yes		
<b>Interior</b>		<b>Exterior</b>	
Bedrooms	3	Garages	1
Bathrooms	1	Security	No
Kitchens	1	Pool	No
Recep. Rooms	1	Views	False
Furnished	No		